

Winter Park Base Camp



Dear Guest,

Thank you for choosing to stay with us in our Winter Park Base Camp in Silverado II. We call the condo our “Base Camp” because it is in a great location to access all of Winter Park’s activities, and it is a wonderful place to relax before and after all of your adventures. We will do our best to ensure that your stay is wonderful and that you have a great time in Winter Park. Upon receipt of your deposit, you are confirmed for the following stay:

Confirmed check-in, after 4:00PM on:	xxx
Confirmed check-out, before 11:00AM on:	xxx
Number of nights:	x
Total Price including sales tax and cleaning fee:	\$xxx
Deposit Amount:	\$xxx
Remaining amount due one month prior:	\$xxx

If you need to cancel your reservation, please provide 30 day notice. We will only be able to refund 50% of your payment within 30 days of your stay, and cancellations within 7 days will not be available for a refund.

We are in Silverado **Unit 524**. There is a lock box on the door of the room, and your access code will be **(xxxx)**. There are two additional sets of keys inside the unit. We ask that you put the main key back in the lock box in case you happen to get locked out during your stay.

Directions to Silverado are attached. Please visit our website www.winterparkbasecamp.com for more information such as weather, events, and activities.

We are the owner’s and operators of unit 524, and we spend a lot of our free time there with our friends and family. We do not bother with security deposits, and trust that you will treat our condo like it is your own. We do our best to ensure you have everything you need while you are in Winter Park. If you have any problems during your stay or if you need anything prior to your visit, feel free to contact us by phone or e-mail.

Todd & Corinne Osborne
info@winterparkbasecamp.com

Home Address (if mailing check): 7623 Yule Ct; Arvada, CO 80007

Winter Park Base Camp

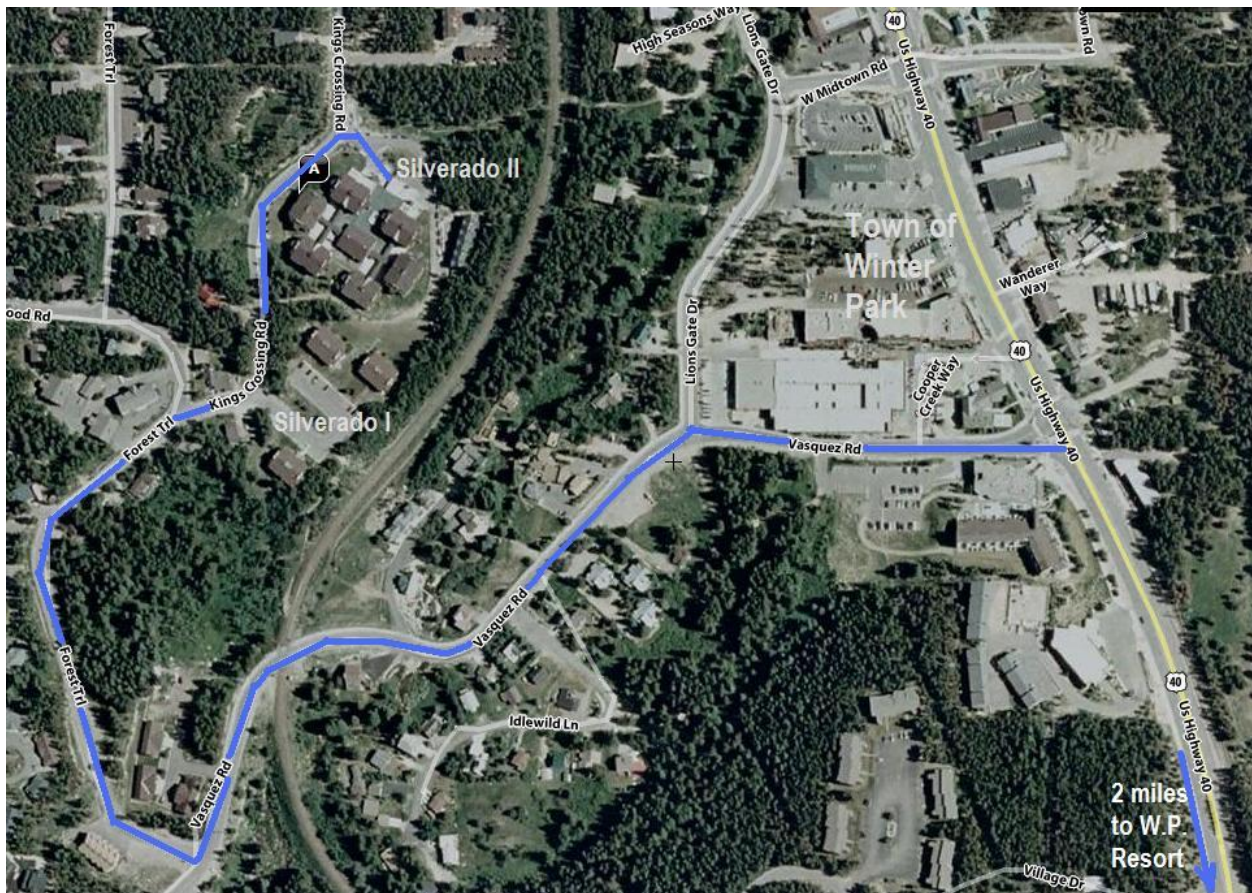
Location

Silverado II, Unit 524
490 Kings Crossing Drive
Winter Park, Colorado 80482

Directions

From Denver International Airport, take Pena Blvd to I-70 West (11 mi). Go through Denver and stay on I-70 West to Highway 40 Exit 232 (51 mi). Drive SLOWLY through the town of Empire, then 25 miles over Berthoud Pass to the town Winter Park (28 mi). The town is 2-3 miles past the Winter Park Resort base. As you enter the town of Winter Park, turn left at the first stoplight, Vasquez Road. Cross the railroad tracks and turn right on Forest Trail. Stay right at the fork in the road as it turns into Kings Crossing Drive. You will see Silverado I, but follow the road to the left and Silverado II will be on your right.

Pull into the parking garage on the left side of the Silverado II lobby entrance. Enter through the door near the ski lockers and take the stairs up, or go through the next door to access the elevator. On the 1st floor, follow the signs to Building 5 where you will take one flight of stairs up to Unit 524.



Winter Park Base Camp

Condo Info

COVERED UNDERGROUND PARKING: Should be plenty of space in the garage, which fits large vehicles and most ski racks (check height of bike racks). Very convenient, and no charge.

LOCK BOX & KEYS: You will be given the code to the lock box. **Put the key back in the lock box** so that you will have access if you happen to get locked out. Two sets of keys will be in the condo for use during your stay.

INTERNET: Wireless Internet access is throughout Silverado II. Should easily connect with your laptop

MOBILE PHONES: Coverage is good within condo for most major cellular providers.

SKI SHOP: In season, visit Brad in the lobby for great rentals, great prices, and ultimate convenience.

SKI SHUTTLE: In season, shuttle picks up from Silverado lobby to Winter Park resort base every 30 minutes. Shuttle arrives at about :10 and :40 minutes after every hour (check schedules to confirm).

TOWN SHUTTLE: If it's too cold to walk to restaurants and bars at night, check the bus schedules to town or to new restaurants at the Winter Park base area.

POOL AREA: Hours are 10am-10pm. Please take towels with you, and return them to 524. Sauna, showers, lockers, hot tubs, and game room are all located in the same area near the lobby. No glass. We have plastic cups in the condo if needed.

TOWELS: Bath towels and hand towels are provided for 6 people, and will be located in the 2 bathrooms. Some additional pool towels are available under the bathroom sinks. Please return to 524.

CLEANING: The condo will not be cleaned during your visit unless arrangements are made ahead of time. If special cleaning service, linens and/or towels are needed, you may contact Teena Cella at (970) 531-1251 and arrange service for a fee.

KITCHEN SUPPLIES: You should have all the dishes, pots, pans, silverware, etc that you need. There should be a supply of paper towels, toilet paper, hand soap, dish soap, cleaning supplies, etc.

LAUNDRY: Coin washers and dryers are on the main floor near the bar & pool.

GARBAGE: Dumpsters located in front of parking garages.

RECYCLING: Under the stairs on the 1st floor of building 5, there is a recycling bin.

DECKS: The main deck has room for a few chairs, and some are provided. The main deck has an external door with stairs to the common area. There are also two small decks off of each bedroom.

SKIS: Please do not bring them in the condo. Please use the ski locker in the garage (#524) accessible with the main key to the condo.

BICYCLES: Please do not bring them into the condo. Please keep them in your vehicle, on a car rack, or lock them to the bike rack in the garage or at the front entrance.

GRILLS/BBQs: Charcoal grills are on the property for use in season. Grills not allowed on the decks.

GAS FIREPLACE: There is a thermostat between the fireplace and patio door. Turn the heat up to desired temp and the fire should turn on and increase flame height. The fire will auto adjust to desired temp. You can adjust flame height with the Lo-Hi knob inside the right side black panel. If the cord from the fireplace is plugged in, the blower will come on to help distribute heat. If you don't like the blower noise, then unplug the blower.

TRAINS: Just like any residence in Winter Park, you can hear trains from the tracks that are nearby. You could hear trains at all times of day & night. Leaving bathroom fan on, turning on air purifier, or earplugs are recommended for light sleepers.

PETS: Condo HOA rules do not allow pets for renters, only owners.

SMOKING: Smoking is not allowed in the condo. If you smoke, please use the deck or open space.

QUIET HOURS: 10:00PM to 7:00AM

CHECK-OUT: None required, but we ask for five easy things. 1) **Ensure the main key is in the lock box**, 2) Put two sets of keys back on key hooks, 3) Run the dishwasher, 4) Take the garbage to the dumpster and recycling bins, and 5) Turn the heat off in summer and down to 50 degrees in the winter.